

Northumberland Marine draft SPA

Coquet Island

Bounding Box of 1km Buffer

Legend

- Bounding box coordinate points
- ▭ Bounding box of Coquet Island 1km buffer
- ▭ Northumberland Marine draft SPA Boundary
- Sea

| Point_Number | Lat | Long |
|--------------|---------------|--------------|
| 1 | 55° 20.943' N | 1° 33.469' W |
| 2 | 55° 20.943' N | 1° 31.138' W |
| 3 | 55° 19.399' N | 1° 31.138' W |
| 4 | 55° 19.399' N | 1° 32.870' W |
| 5 | 55° 19.737' N | 1° 33.469' W |

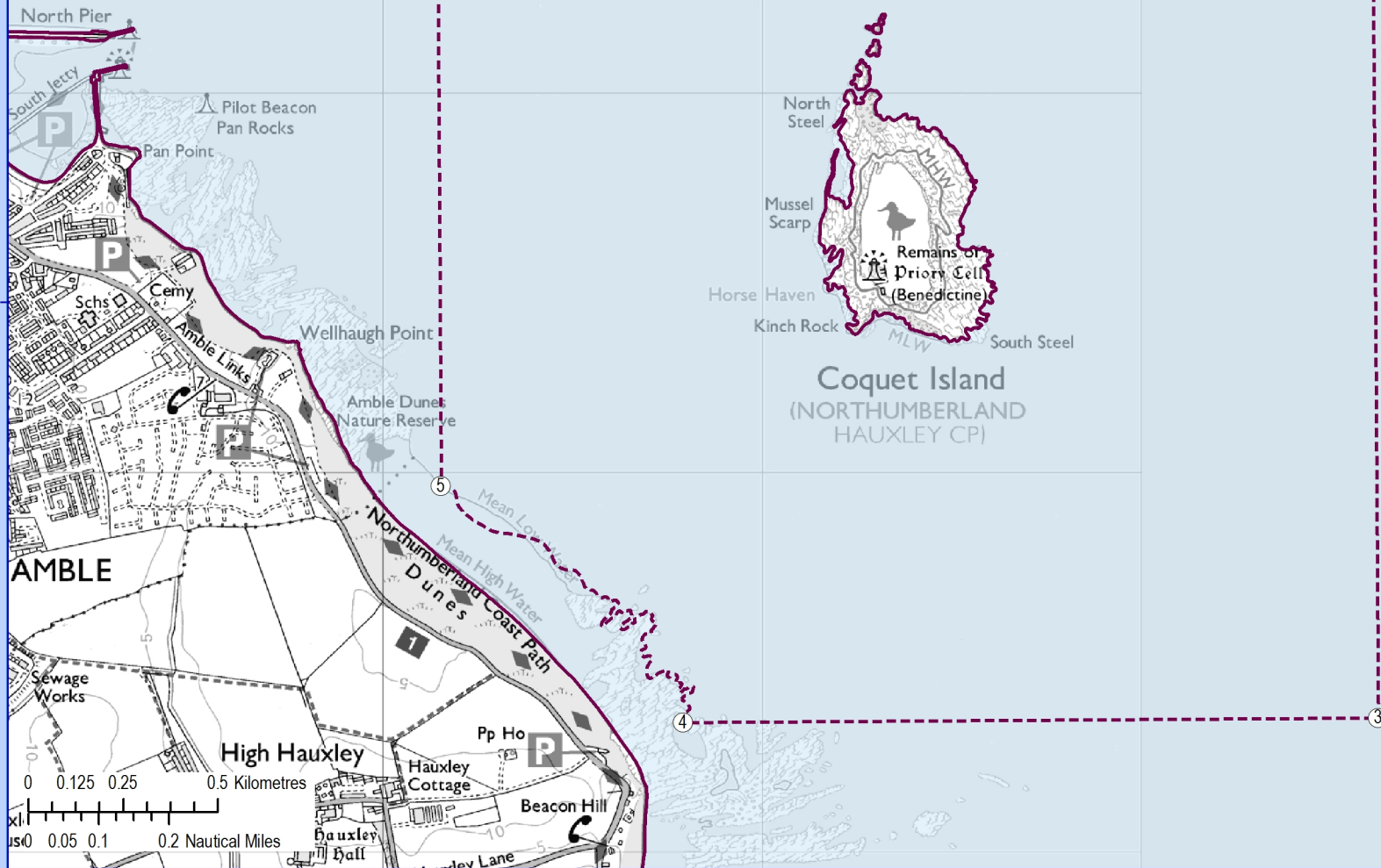
Map produced on 02 June 2015 by M292034, Natural England

Map Reference: Northumberland_DeptBrief_FarnesCoquet

Scale (at A4): 1:17,500

Coordinate System: British National Grid

Admiralty Charts © Crown Copyright, 2015. All rights reserved. License No. EK001-GOV001. NOT TO BE USED FOR NAVIGATION. Contains information from the Ordnance Survey © Crown Copyright and database right 2015. Ordnance Survey 100022021.UKHO Data © British Crown Copyright. All rights reserved. Permission Number Defra012012.001. This product has been derived in part from material obtained from the UK Hydrographic Office with the permission of the Controller of Her Majesty's Stationery Office and UK Hydrographic Office (www.ukho.gov.uk). Map copyright © Natural England 2015.



55°20'00"N

0 0.125 0.25 0.5 Kilometres
0 0.05 0.1 0.2 Nautical Miles

